

List of pages in this Trip Kit

Trip Kit Index
Airport Information For HESH
Terminal Charts For HESH
Revision Letter For Cycle 02-2019
Change Notices
Notebook

General Information

Location: SHARM EL SHEIKH EGY
ICAO/IATA: HESH / SSH
Lat/Long: N27° 58.7', E034° 23.6'
Elevation: 143 ft

Airport Use: Public
Daylight Savings: Not Observed
UTC Conversion: -2:00 = UTC
Magnetic Variation: 4.0° E

Fuel Types: Jet A-1
Customs: Yes
Airport Type: IFR
Landing Fee: Yes
Control Tower: Yes
Jet Start Unit: No
LLWS Alert: No
Beacon: Yes

Sunrise: 0430 Z
Sunset: 1522 Z

Runway Information

Runway: 04L
Length x Width: 10108 ft x 148 ft
Surface Type: asphalt
TDZ-Elev: 134 ft
Lighting: Edge, ALS

Runway: 04R
Length x Width: 10108 ft x 148 ft
Surface Type: asphalt
TDZ-Elev: 114 ft
Lighting: Edge, ALS

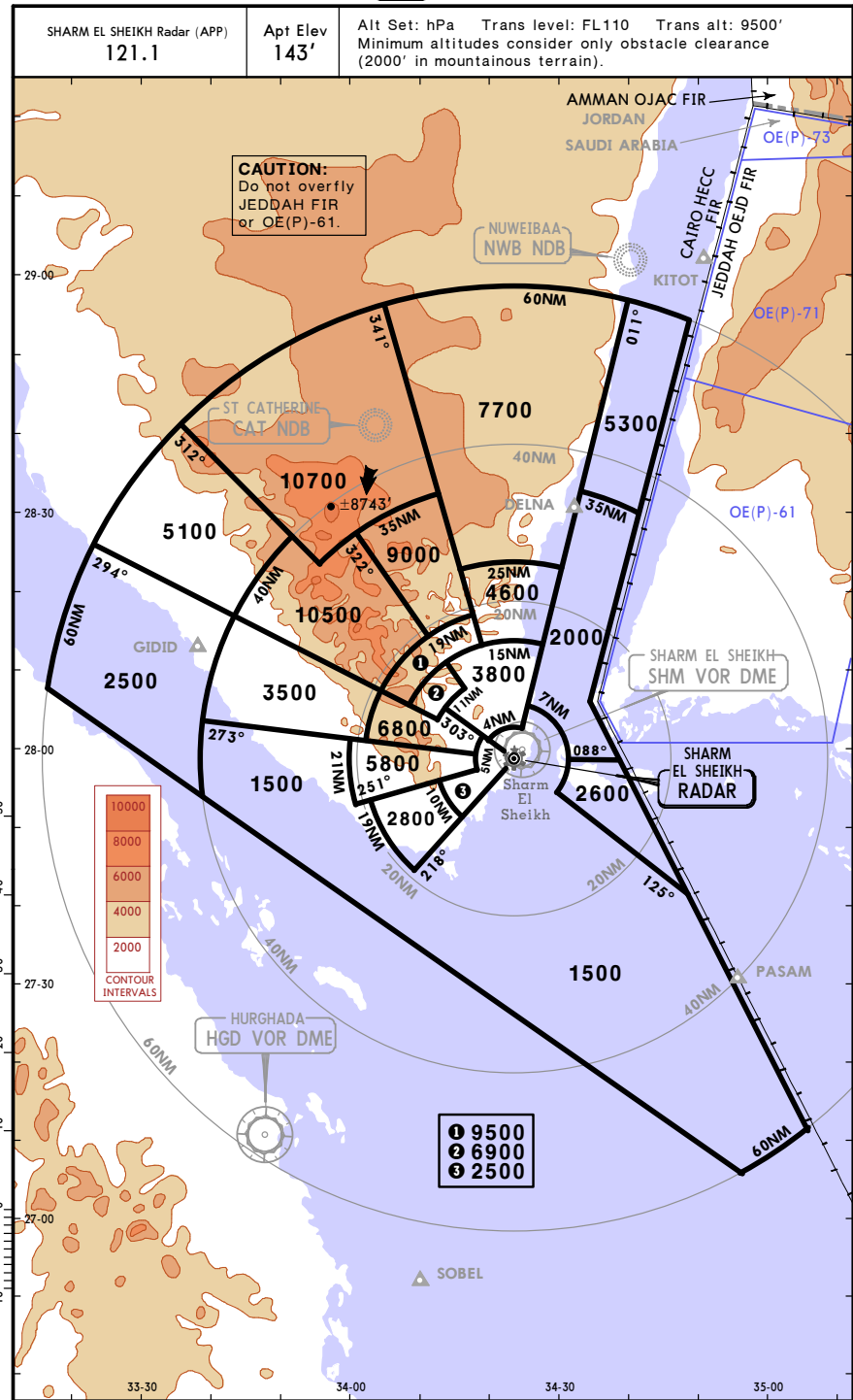
Runway: 22L
Length x Width: 10108 ft x 148 ft
Surface Type: asphalt
TDZ-Elev: 117 ft
Lighting: Edge, ALS

Runway: 22R
Length x Width: 10108 ft x 148 ft
Surface Type: asphalt
TDZ-Elev: 119 ft
Lighting: Edge, ALS

Communication Information

ATIS: 134.000
Sharm El Sheikh Tower: 118.900
Sharm El Sheikh Ground: 121.900
Sharm El Sheikh Radar: 121.100
Sharm El Sheikh Radar: 122.600 Secondary

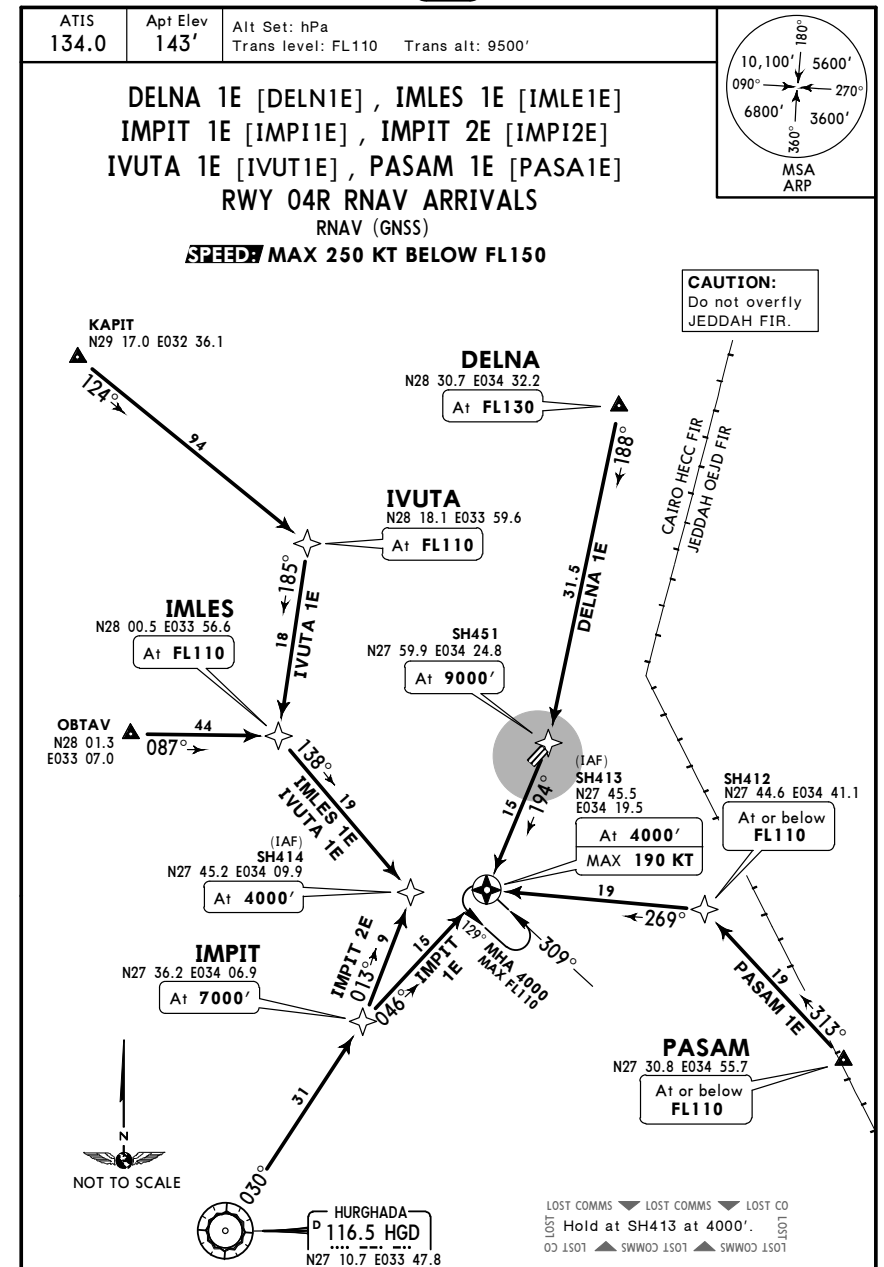
HESH/SSH SHARM EL SHEIKH INTL 22 MAY 15 (10-1R) **JEPPESEN SHARM EL SHEIKH, EGYPT**
RADAR MINIMUM ALTITUDES



CHANGES: Reissue.

© JEPPESEN, 2007, 2015. ALL RIGHTS RESERVED.

HESH/SSH SHARM EL SHEIKH INTL 13 MAR 15 (10-2) **JEPPESEN SHARM EL SHEIKH, EGYPT**
RNAV STAR

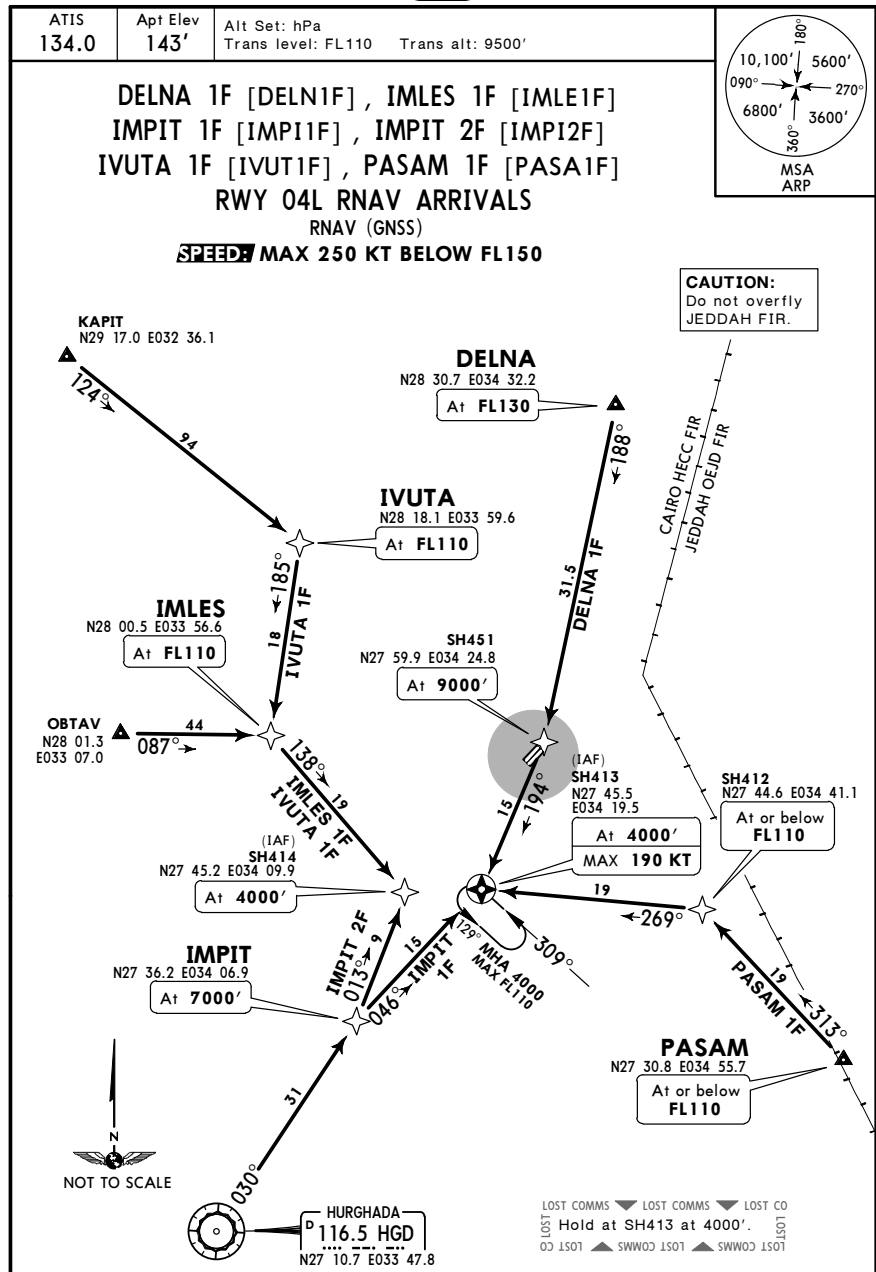


STAR	ROUTING
DELNA 1E	DELNA (FL130) - SH451 (9000') - SH413 (4000'; K190-).
IMLES 1E	IMLES (FL110) - SH414 (4000').
IMPIT 1E	IMPIT (7000') - SH413 (4000'; K190-).
IMPIT 2E	IMPIT (7000') - SH414 (4000').
IVUTA 1E	IVUTA (FL110) - IMLES (FL110) - SH414 (4000').
PASAM 1E	PASAM (FL110-) - SH412 (FL110-) - SH413 (4000'; K190-).

CHANGES: RNAV STAR DELMA renamed DELNA; airway continuation; MSA center.

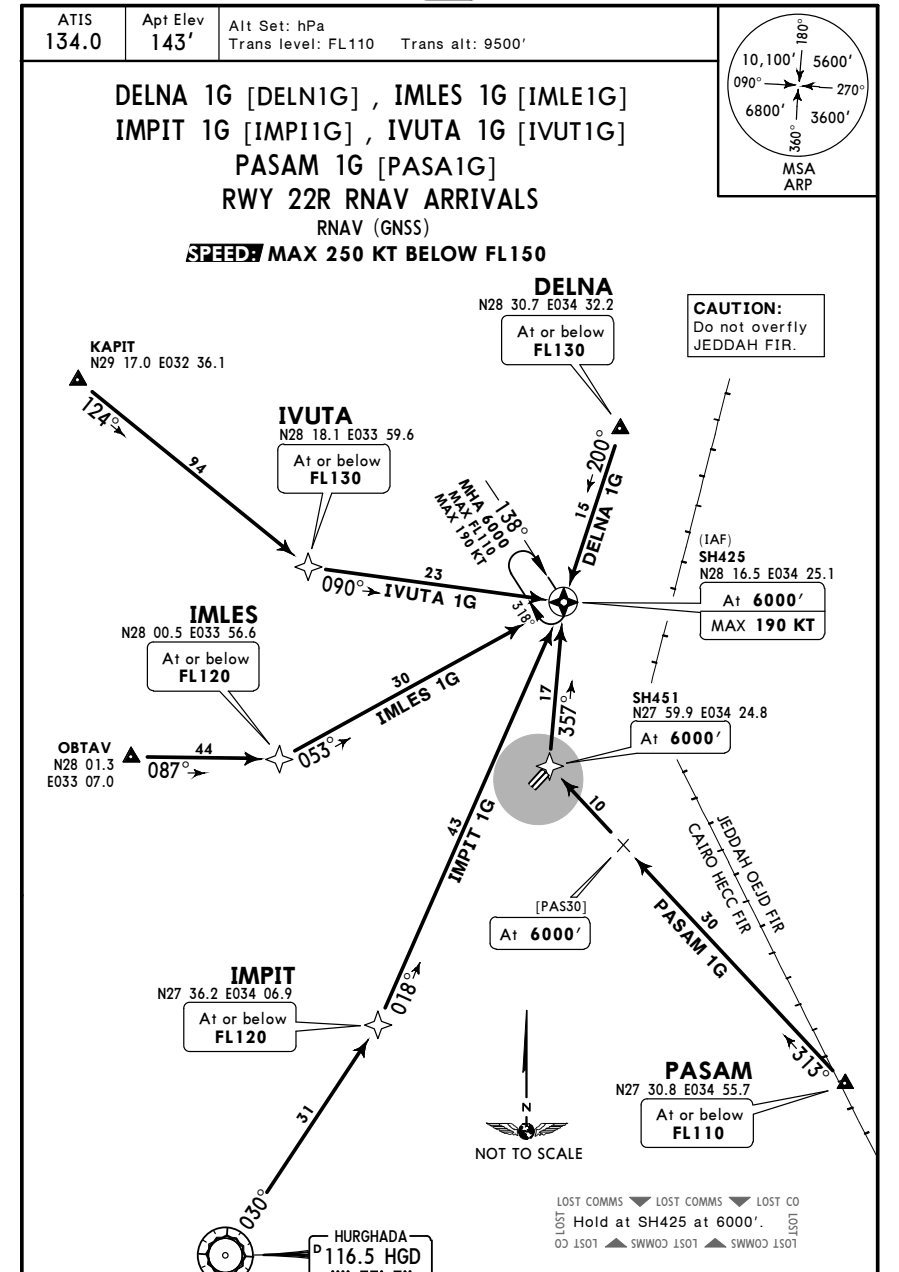
© JEPPESEN, 2006, 2015. ALL RIGHTS RESERVED.

HESH/SSH SHARM EL SHEIKH INTL 13 MAR 15 (10-2A) RNAV STAR



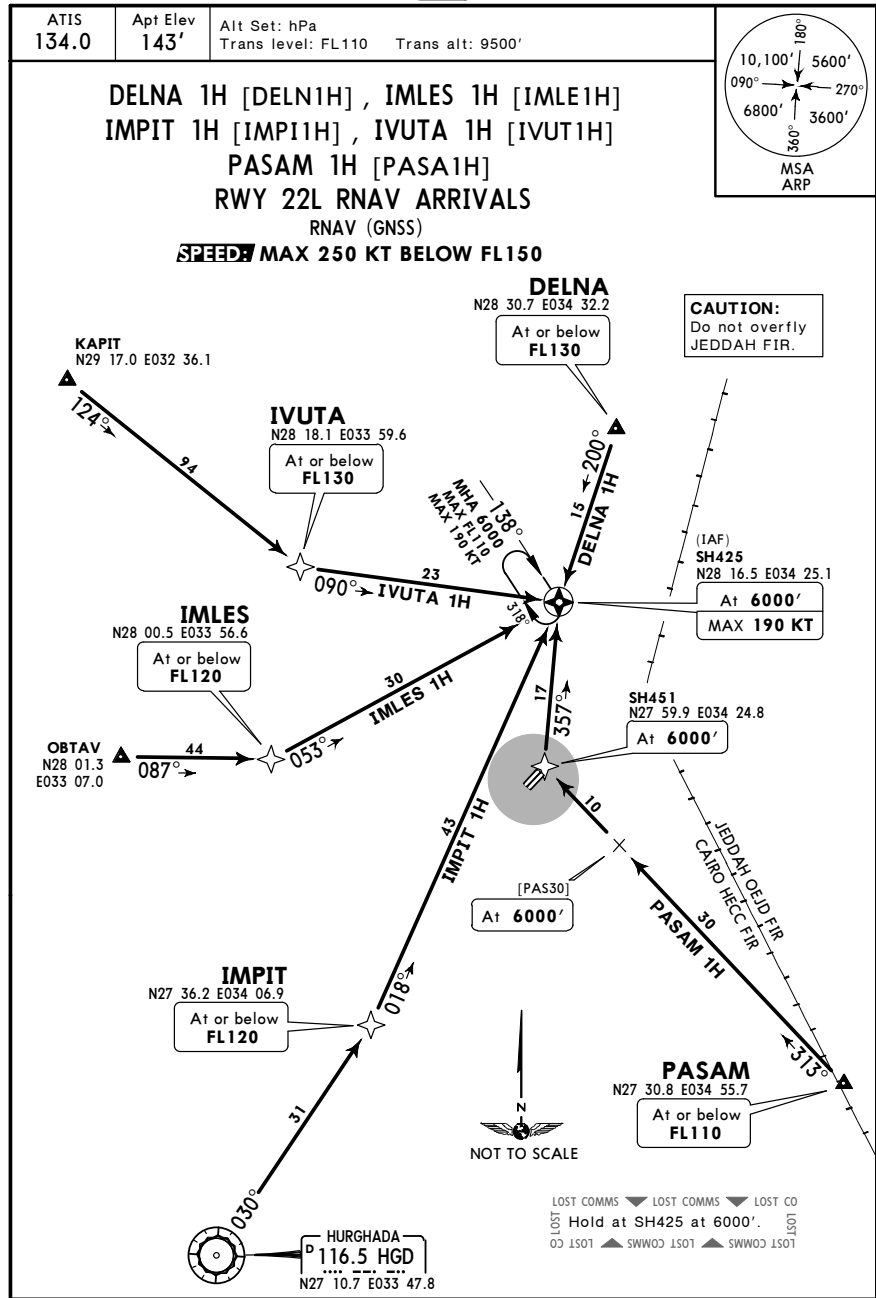
STAR	ROUTING
DELNA 1F	DELNA (FL130) - SH451 (9000') - SH413 (4000'; K190-).
IMLES 1F	IMLES (FL110) - SH414 (4000').
IMPIT 1F	IMPIT (7000') - SH413 (4000'; K190-).
IMPIT 2F	IMPIT (7000') - SH414 (4000').
IVUTA 1F	IVUTA (FL110) - IMLES (FL110) - SH414 (4000').
PASAM 1F	PASAM (FL110-) - SH412 (FL110-) - SH413 (4000'; K190-).

HESH/SSH SHARM EL SHEIKH INTL 13 MAR 15 (10-2B) RNAV STAR



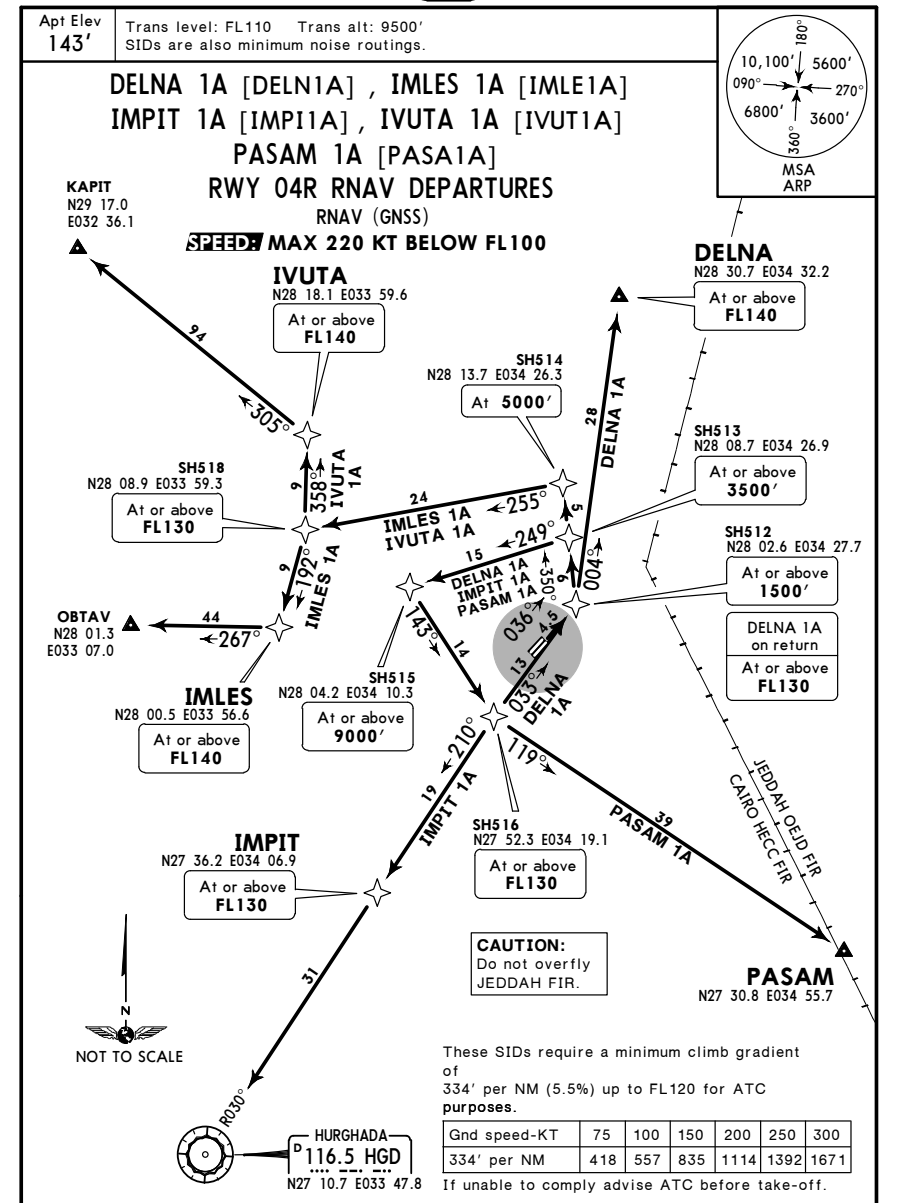
STAR	ROUTING
DELNA 1G	DELNA (FL130-) - SH425 (6000'; K190-).
IMLES 1G	IMLES (FL120-) - SH425 (6000'; K190-).
IMPIT 1G	IMPIT (FL120-) - SH425 (6000'; K190-).
IVUTA 1G	IVUTA (FL130-) - SH425 (6000'; K190-).
PASAM 1G	PASAM (FL110-) - [PAS30] (6000') - SH451 (6000') - SH425 (6000'; K190-).

HESH/SSH SHARM EL SHEIKH INTL 13 MAR 15 (10-2C) RNAV STAR



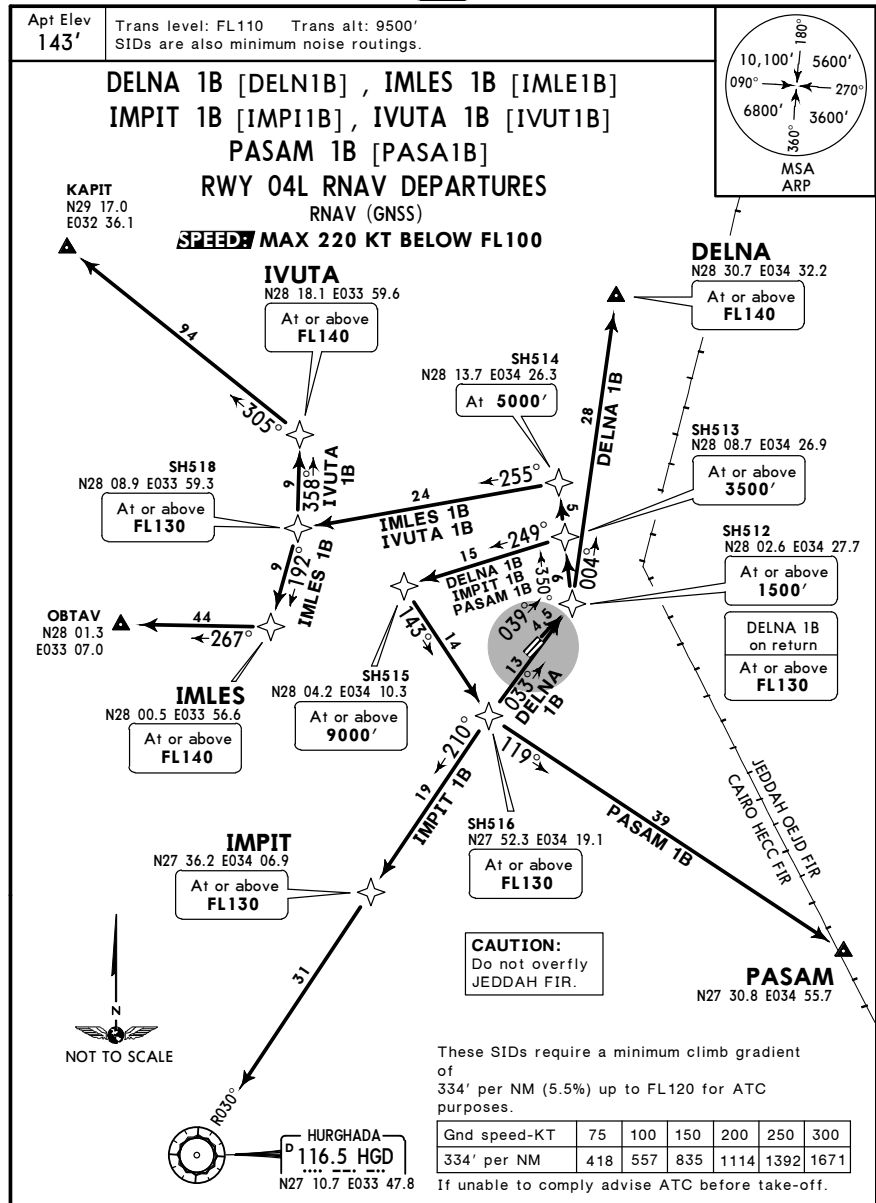
STAR	ROUTING
DELNA 1H	DELNA (FL130-) - SH425 (6000'; K190-).
IMLES 1H	IMLES (FL120-) - SH425 (6000'; K190-).
IMPIT 1H	IMPIT (FL120-) - SH425 (6000'; K190-).
IVUTA 1H	IVUTA (FL130-) - SH425 (6000'; K190-).
PASAM 1H	PASAM (FL110-) - [PAS30] (6000') - SH451 (6000') - SH425 (6000'; K190-).

HESH/SSH SHARM EL SHEIKH INTL 13 MAR 15 (10-3) RNAV SID



SID	ROUTING
DELNA 1A	Climb on 036° track to SH512 (1500'+) - SH513 (3500'+) - SH515 (9000'+) - SH516 (FL130+) - SH512 (FL130+) - DELNA (FL140+).
IMLES 1A	Climb on 036° track to SH512 (1500'+) - SH513 (3500'+) - SH514 (5000') - SH518 (FL130+) - IMLES (FL140+).
IMPIT 1A	Climb on 036° track to SH512 (1500'+) - SH513 (3500'+) - SH515 (9000'+) - SH516 (FL130+) - IMPIT (FL130+).
IVUTA 1A	Climb on 036° track to SH512 (1500'+) - SH513 (3500'+) - SH514 (5000') - SH518 (FL130+) - IVUTA (FL140+).
PASAM 1A	Climb on 036° track to SH512 (1500'+) - SH513 (3500'+) - SH515 (9000'+) - SH516 (FL130+) - PASAM.

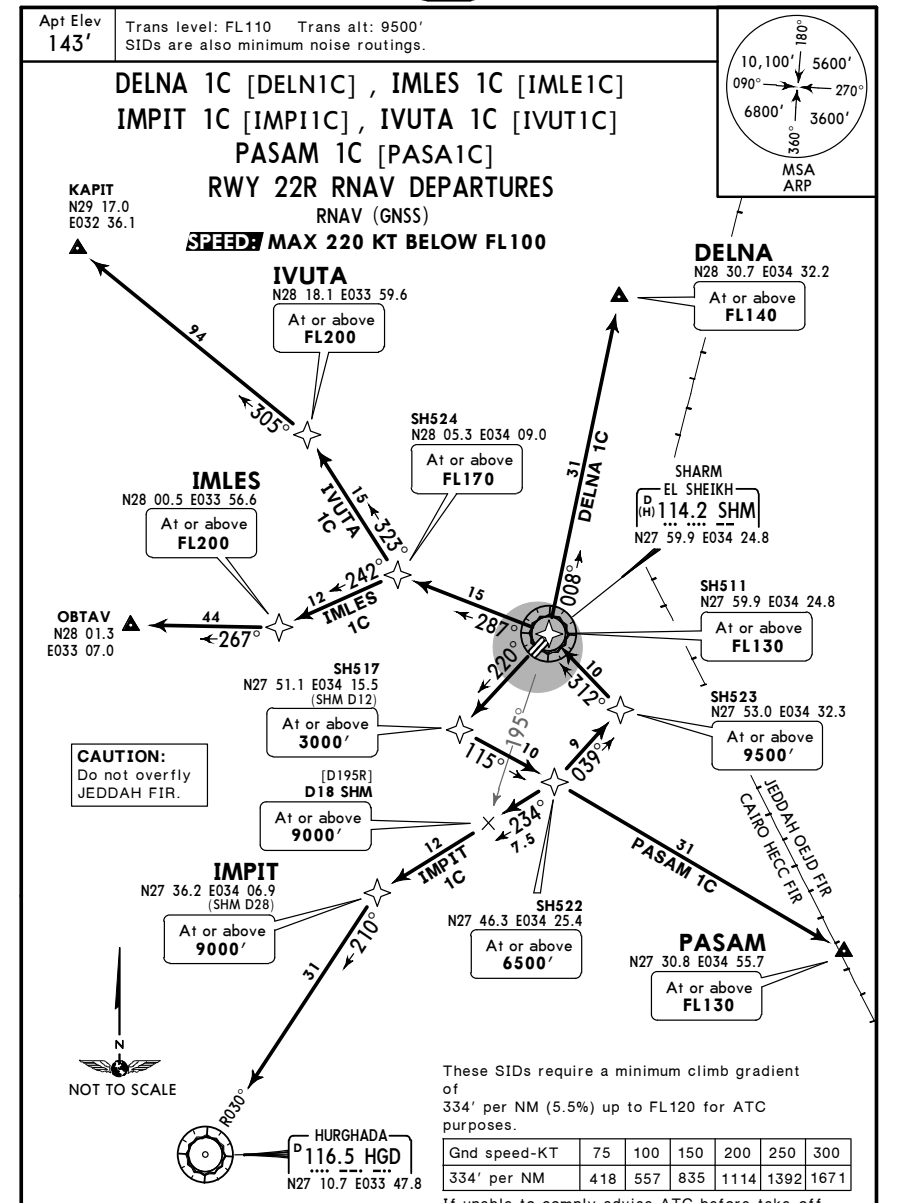
HESH/SSH
SHARM EL SHEIKH INTL 13 MAR 15 (10-3A) **RNAV SID**



SID	ROUTING
DELNA 1B	Climb straight ahead to SH512 (1500'+) - SH513 (3500'+) - SH515 (9000'+) - SH516 (FL130+) - SH512 (FL130+) - DELNA (FL140+).
IMLES 1B	Climb straight ahead to SH512 (1500'+) - SH513 (3500'+) - SH514 (5000') - SH518 (FL130+) - IMLES (FL140+).
IMPIT 1B	Climb straight ahead to SH512 (1500'+) - SH513 (3500'+) - SH515 (9000'+) - SH516 (FL130+) - IMPIT (FL130+).
IVUTA 1B	Climb straight ahead to SH512 (1500'+) - SH513 (3500'+) - SH514 (5000') - SH518 (FL130+) - IVUTA (FL140+).
PASAM 1B	Climb straight ahead to SH512 (1500'+) - SH513 (3500'+) - SH515 (9000'+) - SH516 (FL130+) - PASAM.

CHANGES: RNAV SID DELMA renamed DELNA; airway continuation; MSA center. © JEPPESEN, 2006, 2015. ALL RIGHTS RESERVED.

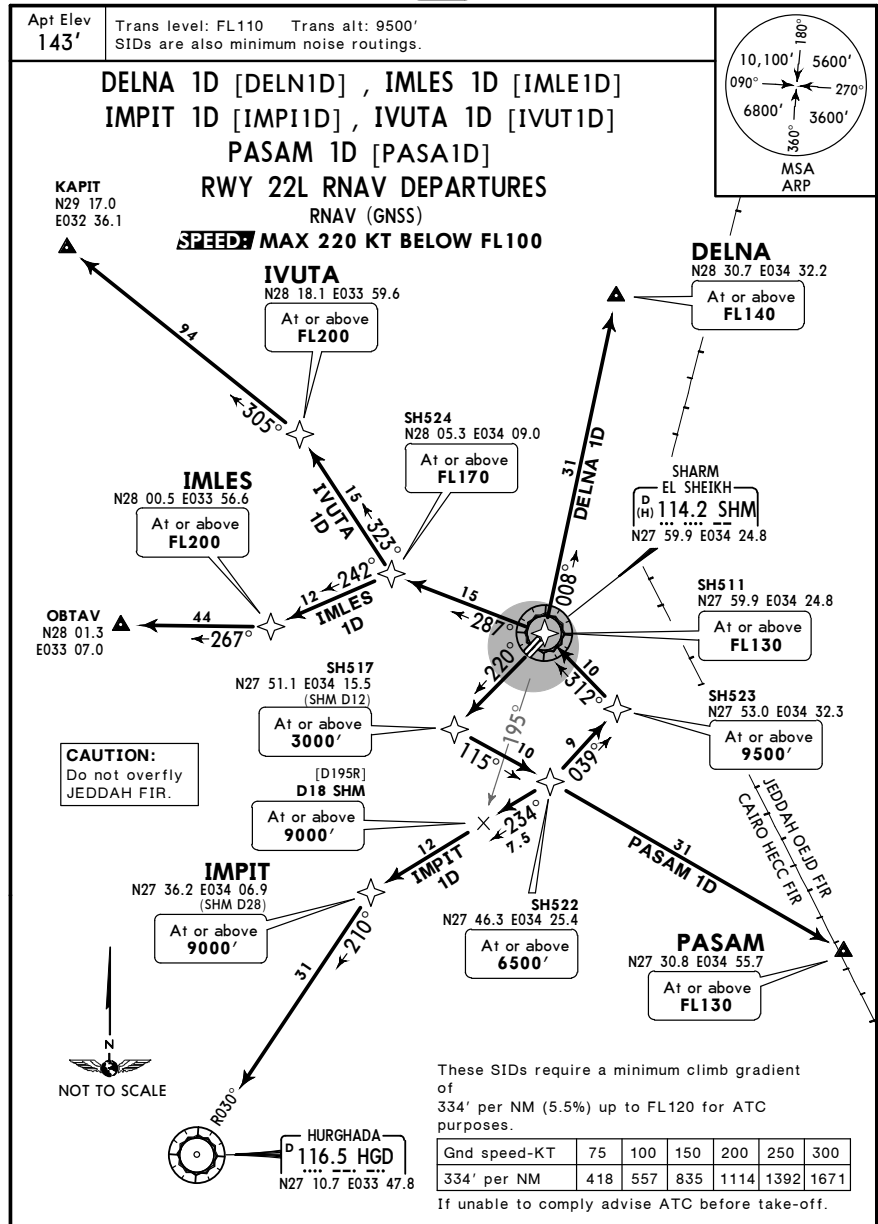
HESH/SSH
SHARM EL SHEIKH INTL 13 MAR 15 (10-3B) **RNAV SID**



SID	ROUTING
DELNA 1C	Climb on 220° track to SH517 (3000'+) - SH522 (6500'+) - SH523 (9500'+) - SH511 (FL130+) - DELNA (FL140+).
IMLES 1C	Climb on 220° track to SH517 (3000'+) - SH522 (6500'+) - SH523 (9500'+) - SH511 (FL130+) - SH524 (FL170+) - IMLES (FL200+).
IMPIT 1C	Climb on 220° track to SH517 (3000'+) - SH522 (6500'+) - [D195R] (9000'+) - IMPIT (9000'+).
IVUTA 1C	Climb on 220° track to SH517 (3000'+) - SH522 (6500'+) - SH523 (9500'+) - SH511 (FL130+) - SH524 (FL170+) - IVUTA (FL200+).
PASAM 1C	Climb on 220° track to SH517 (3000'+) - SH522 (6500'+) - PASAM (FL130+).

CHANGES: RNAV SID DELMA renamed DELNA; airway continuation; MSA center. © JEPPESEN, 2006, 2015. ALL RIGHTS RESERVED.

HESH/SSH
SHARM EL SHEIKH INTL 13 MAR 15 (10-3C) RNAV SID



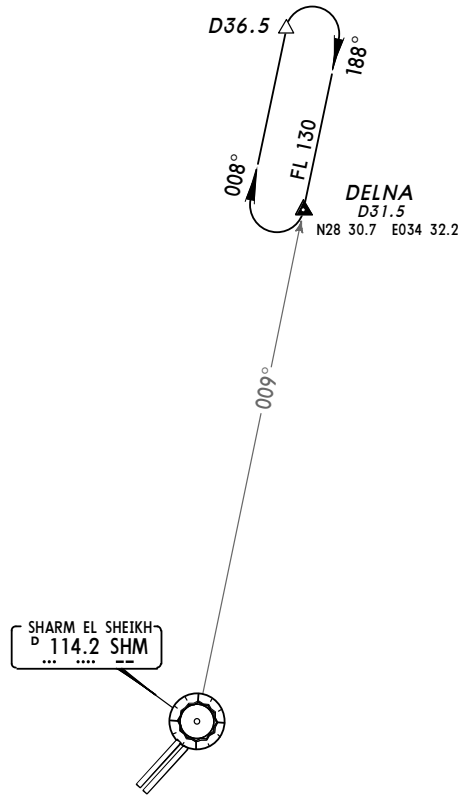
SID	ROUTING
DELNA 1D	Climb on 220° track to SH517 (3000'+) - SH522 (6500'+) - SH523 (9500'+) - SH511 (FL130+) - DELNA (FL140+).
IMLES 1D	Climb on 220° track to SH517 (3000'+) - SH522 (6500'+) - SH523 (9500'+) - SH511 (FL130+) - SH524 (FL170+) - IMLES (FL200+).
IMPIT 1D	Climb on 220° track to SH517 (3000'+) - SH522 (6500'+) - [D195R] (9000'+) - IMPIT (9000'+).
IVUTA 1D	Climb on 220° track to SH517 (3000'+) - SH522 (6500'+) - SH523 (9500'+) - SH511 (FL130+) - SH524 (FL170+) - IVUTA (FL200+).
PASAM 1D	Climb on 220° track to SH517 (3000'+) - SH522 (6500'+) - PASAM (FL130+).

CHANGES: RNAV SID DELMA renamed DELNA; airway continuation; MSA center. © JEPPESEN, 2006, 2015. ALL RIGHTS RESERVED.

HESH/SSH 1 FEB 13 (10-8) SHARM EL SHEIKH INTL

SHARM EL SHEIKH OUTER FIX HOLDING PROCEDURES

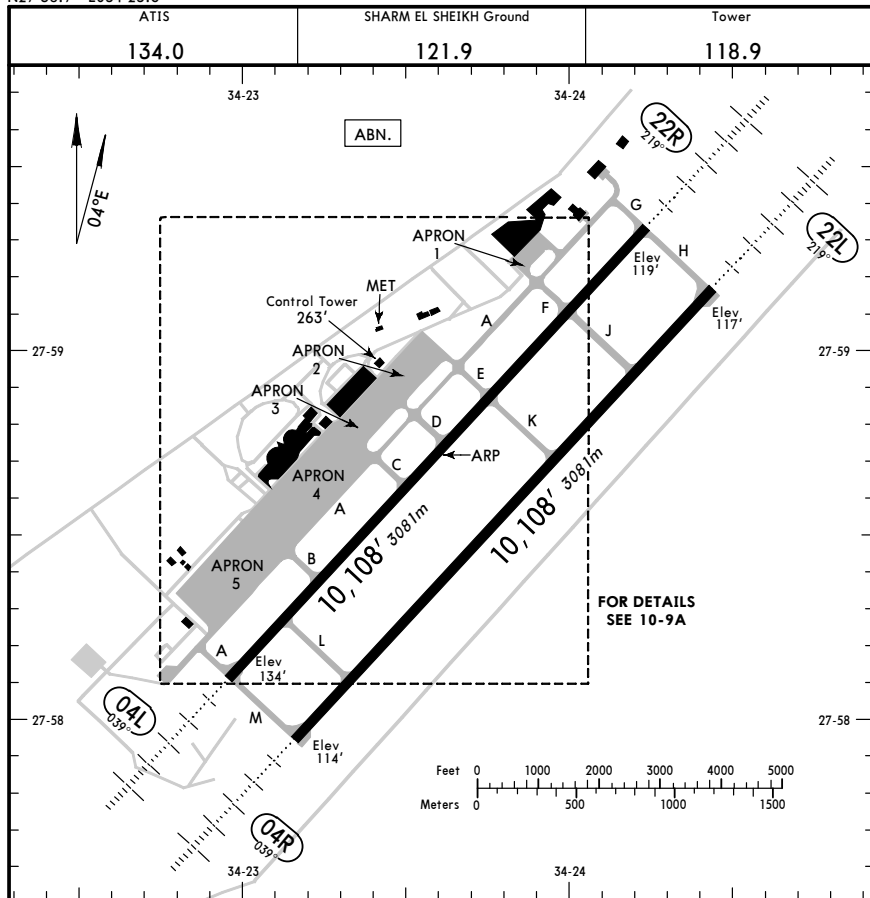
Only to be used, when excessive holdings are expected. Vectors to compulsory reporting point DELNA will be provided by ATC.



CHANGES: Fix designation. © JEPPESEN, 2001, 2013. ALL RIGHTS RESERVED.

HESH/SSH
Apt Elev **143'**
N27 58.7 E034 23.6

JEPPESSEN SHARM EL SHEIKH, EGYPT
23 MAY 14 **(10-9)**
SHARM EL SHEIKH INTL



FOR DETAILS SEE 10-9A

ADDITIONAL RUNWAY INFORMATION

RWY	USABLE LENGTHS LANDING BEYOND	TAKE-OFF	WIDTH
04L 22R	HIRL (60m) HIALS PAPI (3.0°)		148' 45m
04R 22L	HIRL (60m) HIALS PAPI (3.0°)		148' 45m

TAKE-OFF

AIR CARRIER (JAA)

All Rwy's

LVP must be in force

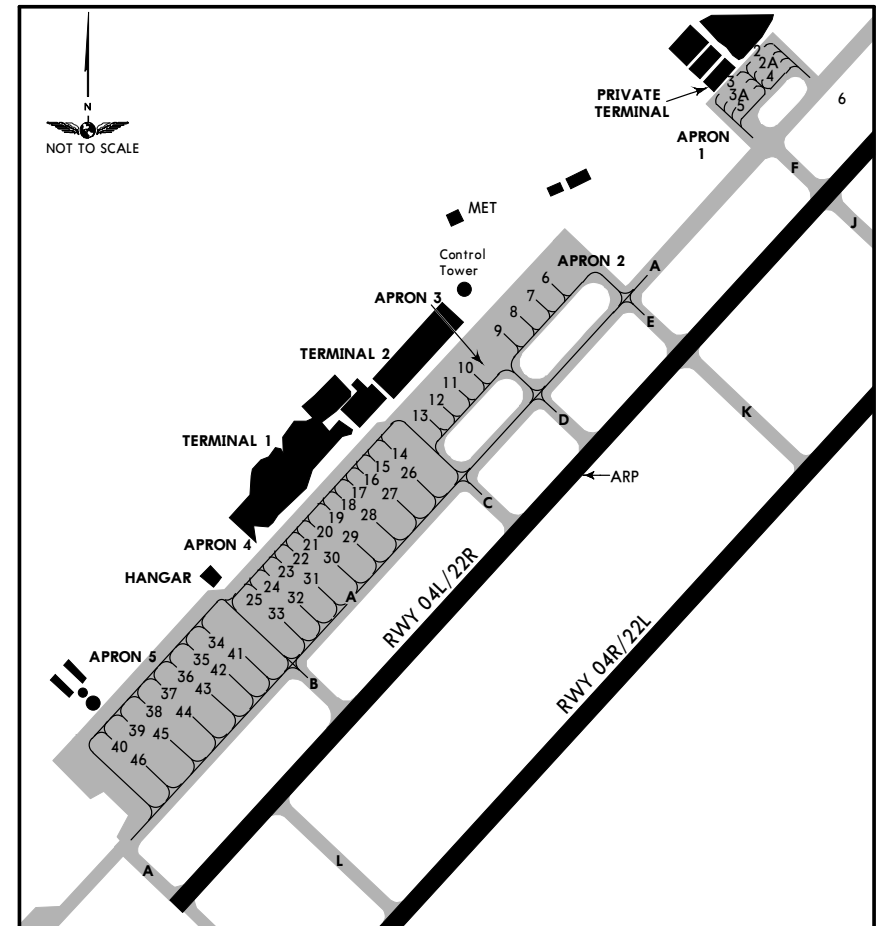
RCLM (DAY only)
or RL

RCLM (DAY only)
or RL

A		
B	250m	400m
C		
D	300m	

HESH/SSH

JEPPESSEN SHARM EL SHEIKH, EGYPT
23 MAY 14 **(10-9A)**
SHARM EL SHEIKH INTL



NOT TO SCALE

INS COORDINATES

STAND No.	COORDINATES	ELEV	STAND No.	COORDINATES	ELEV
2, 2A	N27 59.3 E034 23.9	135	26, 27	N27 58.7 E034 23.3	155
3	N27 59.3 E034 23.9	137	28	N27 58.7 E034 23.3	155
3A	N27 58.3 E034 23.9	136	29 thru 31	N27 58.6 E034 23.2	155
4	N27 58.3 E034 23.9	134	32	N27 58.6 E034 23.1	155
5	N27 58.2 E034 23.9	136	33	N27 58.5 E034 23.1	155
6	N27 59.0 E034 23.5	150	34	N27 58.5 E034 23.0	156
7	N27 59.0 E034 23.5	151	35	N27 58.5 E034 23.0	155
8	N27 58.9 E034 23.5	152	36	N27 58.4 E034 23.0	155
9	N27 58.9 E034 23.5	153	37	N27 58.4 E034 23.0	154
10	N27 58.9 E034 23.4	155	38, 39	N27 58.4 E034 22.9	154
11	N27 58.8 E034 23.4	155	40	N27 58.3 E034 22.9	153
12	N27 58.8 E034 23.4	156	41	N27 58.5 E034 23.1	154
13	N27 58.8 E034 23.3	156	42	N27 58.5 E034 23.0	154
14 thru 16	N27 58.7 E034 23.3	156	43	N27 58.4 E034 23.0	154
17	N27 58.7 E034 23.2	156	44	N27 58.4 E034 23.0	153
18, 19	N27 58.7 E034 23.2	155	45	N27 58.4 E034 22.9	153
20 thru 22	N27 58.6 E034 23.2	155	46	N27 58.3 E034 22.9	153
23 thru 25	N27 58.6 E034 23.1	155			

HESH/SSH

JEPPesen
21 SEP 18 **(10-9S)**

SHARM EL SHEIKH, EGYPT SHARM EL SHEIKH INTL

Standard

STRAIGHT-IN RWY	A	B	C	D
04L				
ILS	388' (254')	400' (266')	408' (274')	419' (285')
FULL	R600m	R600m	R600m	R650m
ALS out	R1300m	R1300m	R1300m	R1400m
LOC	640' (506')	640' (506')	640' (506')	640' (506')
	R1500m	R1500m	R1600m	R1600m
ALS out	R1500m	R1500m	R2400m	R2400m
RNP	400' (266')	400' (266')	400' (266')	400' (266')
(LNAV/VNAV)	R750m	R750m	R750m	R750m
ALS out	R1300m	R1300m	R1300m	R1300m
RNP	540' (406')	540' (406')	540' (406')	540' (406')
(LNAV)	R1200m	R1200m	R1200m	R1200m
ALS out	R1500m	R1500m	R1900m	R1900m
VOR	640' (506')	640' (506')	640' (506')	640' (506')
	R1500m	R1500m	R1600m	R1600m
ALS out	R1500m	R1500m	R2400m	R2400m
VOR	640' (506')	640' (506')	640' (506')	640' (506')
	R1800m	R1800m	R2000m	R2000m
ALS out	R2600m	R2600m	R2800m	R2800m
04R				
RNP	380' (266')	380' (266')	380' (266')	380' (266')
(LNAV/VNAV)	R750m	R750m	R750m	R750m
ALS out	R1300m	R1300m	R1300m	R1300m
RNP	540' (426')	540' (426')	540' (426')	540' (426')
(LNAV)	R1300m	R1300m	R1300m	R1300m
ALS out	R1500m	R1500m	R2000m	R2000m
VOR	570' (456')	570' (456')	570' (456')	570' (456')
	R1400m	R1400m	R1400m	R1400m
ALS out	R1500m	R1500m	R2100m	R2100m
VOR	570' (456')	570' (456')	570' (456')	570' (456')
	R1600m	R1600m	R1800m	R1800m
ALS out	R2300m	R2300m	R2500m	R2500m
22L				
RNP	400' (283')	400' (283')	400' (283')	400' (283')
(LNAV/VNAV)	R750m	R750m	R750m	R750m
ALS out	R1400m	R1400m	R1400m	R1400m
RNP	540' (423')	540' (423')	540' (423')	540' (423')
(LNAV)	R1300m	R1300m	R1300m	R1300m
ALS out	R1500m	R1500m	R2000m	R2000m
22R				
RNP	400' (281')	400' (281')	400' (281')	400' (281')
(LNAV/VNAV)	R750m	R750m	R750m	R750m
ALS out	R1400m	R1400m	R1400m	R1400m
RNP	540' (421')	540' (421')	540' (421')	540' (421')
(LNAV)	R1300m	R1300m	R1300m	R1300m
ALS out	R1500m	R1500m	R2000m	R2000m

① W/o HUD/AP/FD: RVR 750m. ② Continuous Descent Final Approach.

TAKE-OFF

	Low Visibility Take-off Day: RL & RCLM Night: RL	Day: RL or RCLM Night: RL	Adequate vis ref (Day only)
A			
B			
C	R300m	400m	500m
D			

HESH/SSH

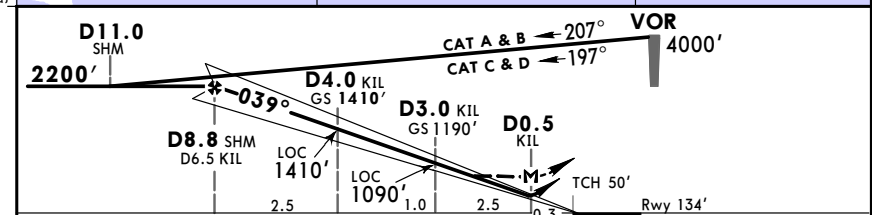
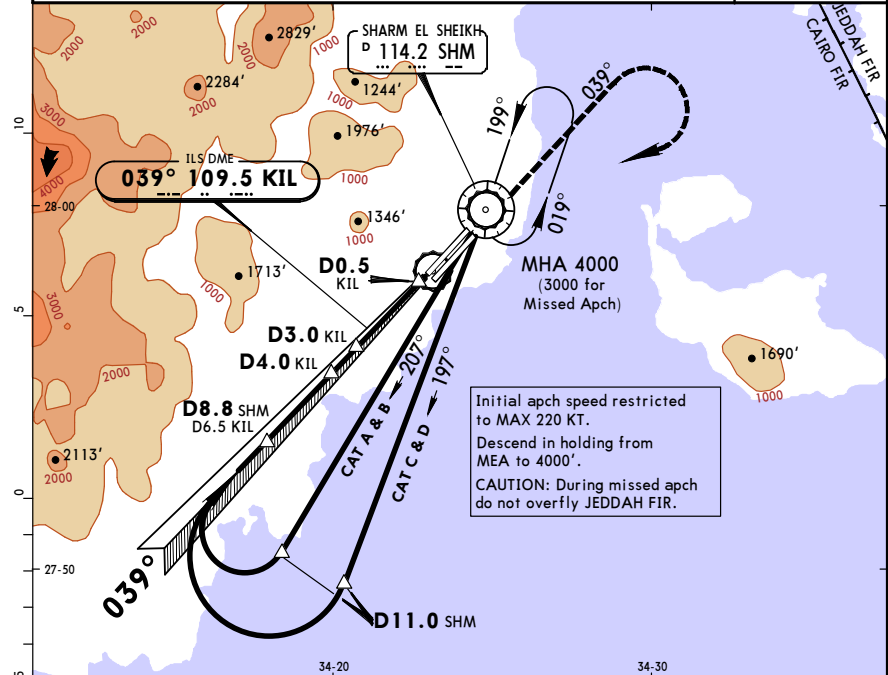
JEPPesen
12 OCT 18 **(11-1)**

SHARM EL SHEIKH INTL SHARM EL SHEIKH INTL ILS Rwy 04L

ATIS	SHARM EL SHEIKH Radar (APP)	SHARM EL SHEIKH Tower	Ground
134.0	121.1	118.9	121.9
LOC KIL 109.5	Final Apch Crs 039°	GS D4.0 KIL 1410' (1276')	ILS DA(H) Refer to Minimums Apt Elev 143' Rwy 134'

MISSED APCH: Climb STRAIGHT AHEAD on 039° to 2500', then turn RIGHT to reach VOR at 3000', or as directed.

Alt Set: hPa Rwy Elev: 5 hPa Trans level: FL 110 Trans alt: 9500' MSA SHM VOR

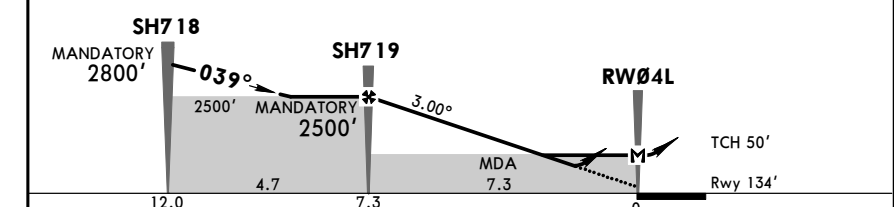
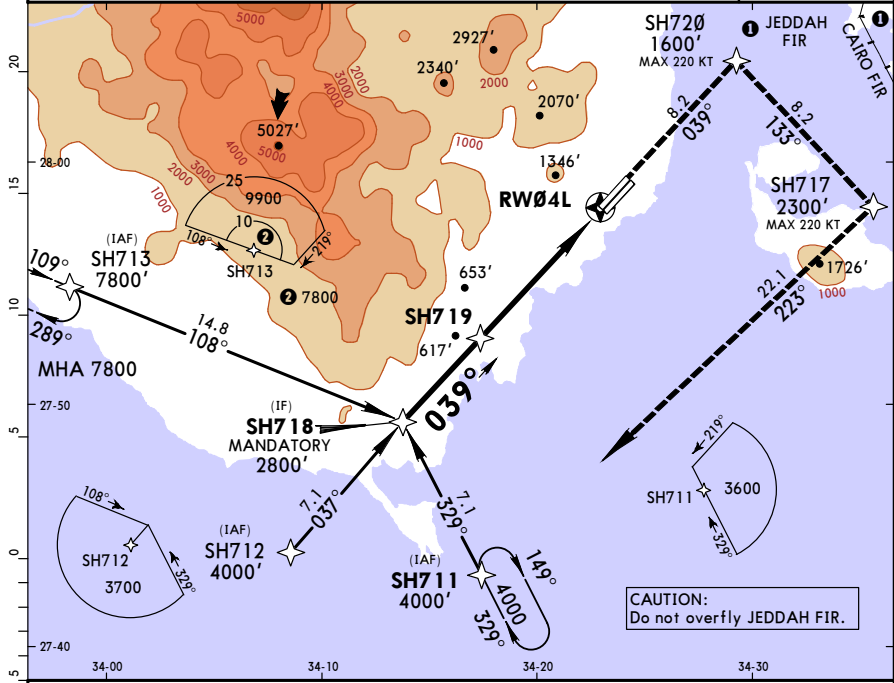


Gnd speed-Kts	70	90	100	120	140	160	HIALS	2500'	on 039°
ILS GS or									
LOC Descent Angle	3.00°	372	478	531	637	849			
MAP at D0.5 KIL									

A	STRAIGHT-IN LANDING RWY 04L		LOC (GS out)	
	FULL	ALS out	ALS out	ALS out
A				
B				
C	800m	1200m	800m	1600m
D			1200m	

HESH/SSH SHARM EL SHEIKH INTL 12 MAY 17 (12-1) Eff 25 May **RNP Rwy 04L**

ATIS 134.0		SHARM EL SHEIKH Radar (APP) 121.1		SHARM EL SHEIKH Tower 118.9		Ground 121.9	
RNAV	Final Apch Crs 039°	Mandatory Alt SH719 2500' (2366')	LNAV/VNAV DA(H) 400' (266')	Apt Elev 143'	Rwy 134'	TAA 25 NM IAF	
MISSED APCH: Climb direct to SH720. Turn RIGHT to SH717, then turn RIGHT climbing to SH711 at 4000' and hold, or as directed.							
Alt Set: hPa		Rwy Elev: 5 hPa		Trans level: FL 110		Trans alt: 9500'	
Baro-VNAV operations not authorized below 5°C.							

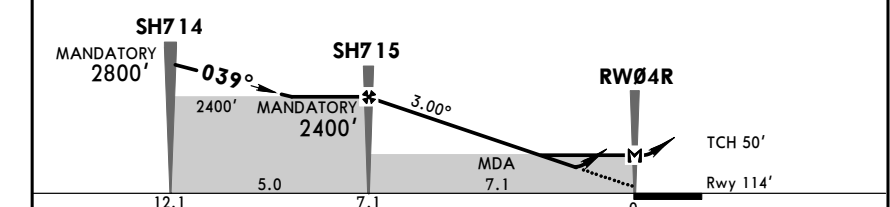
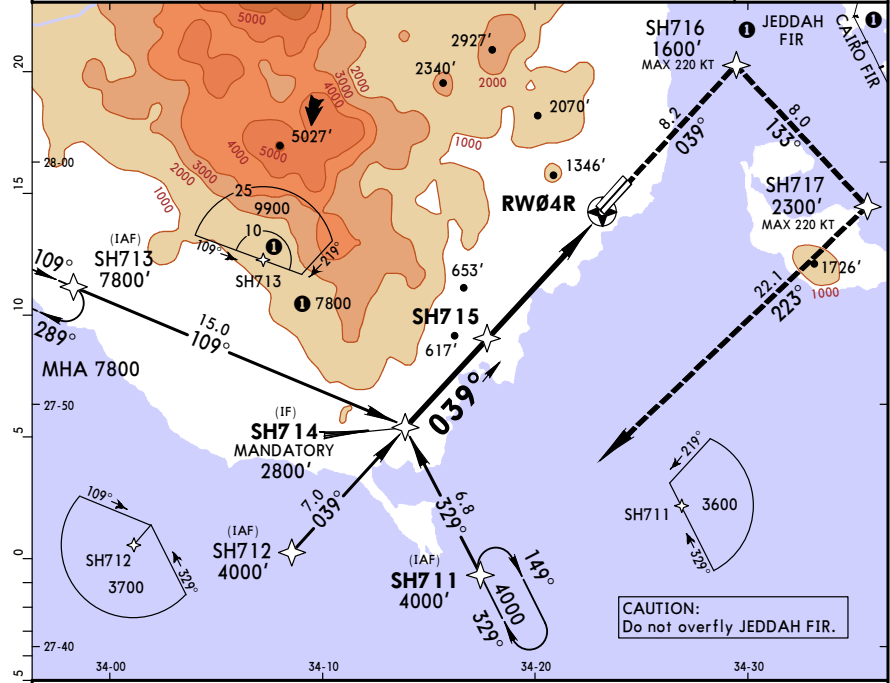


Gnd speed-Kts	70	90	100	120	140	160	HIALS PAPI PAPI	SH720 D	
Descent Angle	3.00°	372	478	531	637	743			849
LNAV/VNAV: MAP at DA								HIALS PAPI PAPI	SH716 D
LNAV: MAP at RW04L									

STRAIGHT-IN LANDING RWY 04L			
LNAV/VNAV DA(H) 400' (266')		LNAV MDA(H) 540' (406')	
ALS out		ALS out	
A			
B			
C	900m	1300m	1600m
D			1600m

HESH/SSH SHARM EL SHEIKH INTL 12 MAY 17 (12-2) Eff 25 May **RNP Rwy 04R**

ATIS 134.0		SHARM EL SHEIKH Radar (APP) 121.1		SHARM EL SHEIKH Tower 118.9		Ground 121.9	
RNAV	Final Apch Crs 039°	Mandatory Alt SH715 2400' (2286')	LNAV/VNAV DA(H) 380' (266')	Apt Elev 143'	Rwy 114'	TAA 25 NM IAF	
MISSED APCH: Climb direct to SH716. Turn RIGHT to SH717, then turn RIGHT climbing to SH711 at 4000' and hold, or as directed.							
Alt Set: hPa		Rwy Elev: 4 hPa		Trans level: FL 110		Trans alt: 9500'	
Baro-VNAV operations not authorized below 5°C.							



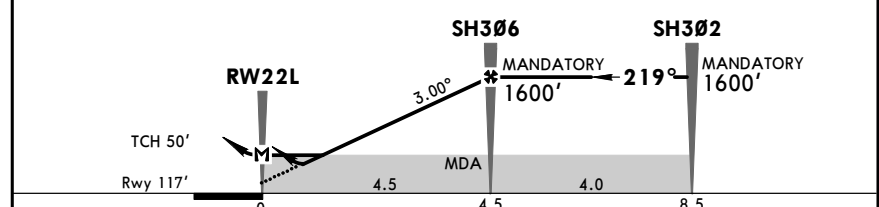
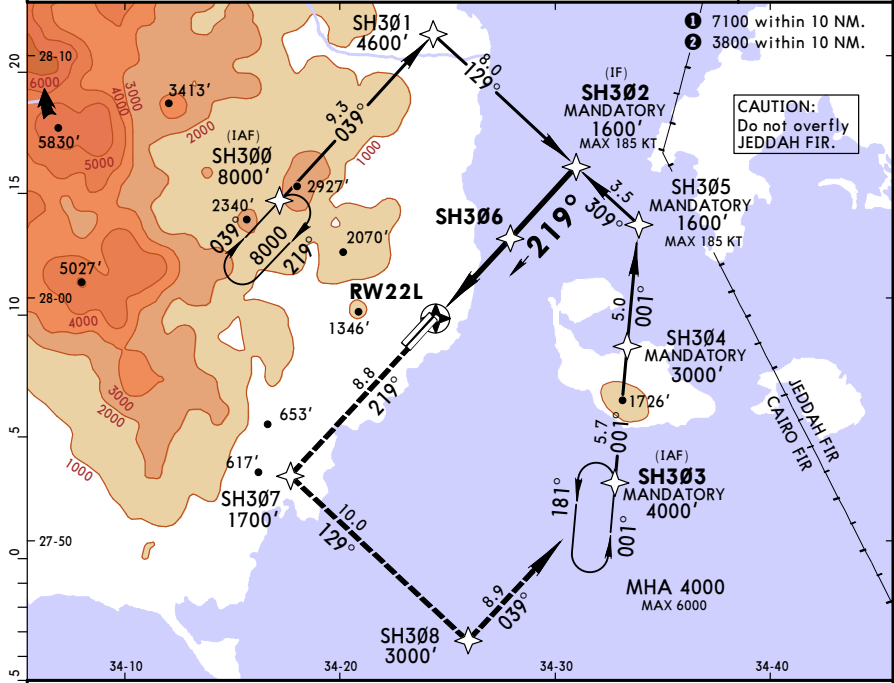
Gnd speed-Kts	70	90	100	120	140	160	HIALS PAPI PAPI	SH716 D	
Descent Angle	3.00°	372	478	531	637	743			849
LNAV/VNAV: MAP at DA								HIALS PAPI PAPI	SH716 D
LNAV: MAP at RW04R									

STRAIGHT-IN LANDING RWY 04R			
LNAV/VNAV DA(H) 380' (266')		LNAV MDA(H) 540' (426')	
ALS out		ALS out	
A			
B			
C	900m	1300m	1600m
D			1600m

HESH/SSH SHARM EL SHEIKH INTL RNP Rwy 22L

29 SEP 17 (12-3) Eff 12 Oct

ATIS 134.0		SHARM EL SHEIKH Radar (APP) 121.1		SHARM EL SHEIKH Tower 118.9		Ground 121.9	
RNAV	Final Apch Crs 219°	Mandatory Alt SH306 1600' (1483')	LNAV/VNAV DA(H) 400' (283')	Apt Elev 143'	Rwy 117'		
MISSED APCH: Climb direct to SH307. Turn LEFT to SH308, then turn LEFT climbing to SH303 at 4000' and hold, or as directed.							
Alt Set: hPa Rwy Elev: 4 hPa Trans level: FL 110 Trans alt: 9500' Baro-VNAV operations not authorized below 5°C.							
MSA ARP							



Gnd speed-Kts	70	90	100	120	140	160		SH307
Descent Angle	3.00°	372	478	531	637	743		
LNAV/VNAV: MAP at DA								
LNAV: MAP at RW22L								

LNAV/VNAV		LNAV	
DA(H) 400' (283')		MDA(H) 540' (423')	

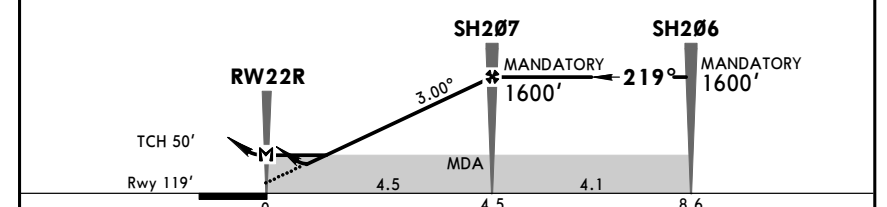
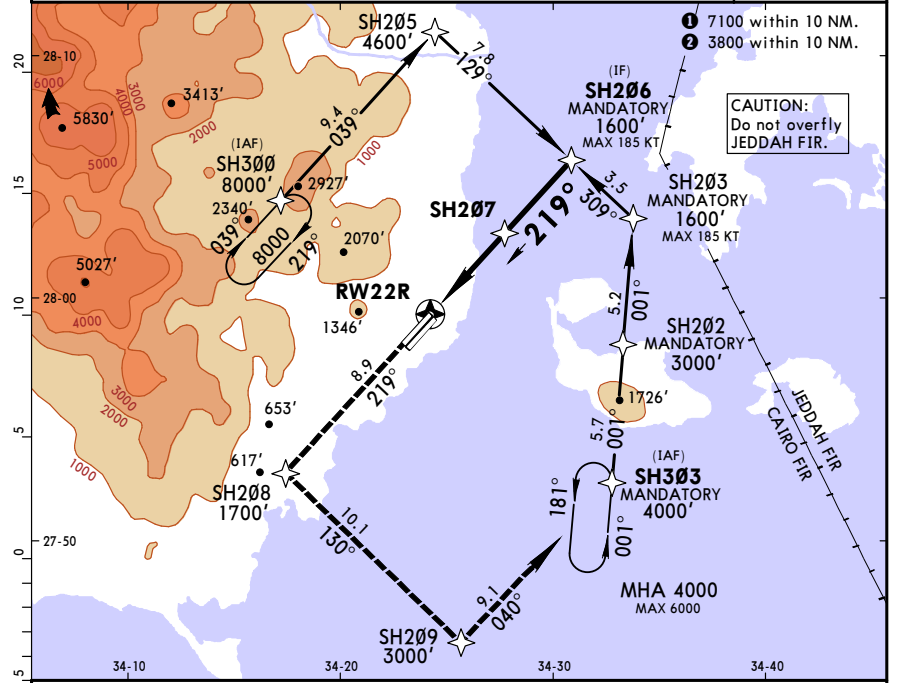
ALS out		ALS out	
A			
B		800m	1600m
C	900m	1400m	
D		1600m	

CHANGES: Altitude at SH303.

HESH/SSH SHARM EL SHEIKH INTL RNP Rwy 22R

29 SEP 17 (12-4) Eff 12 Oct

ATIS 134.0		SHARM EL SHEIKH Radar (APP) 121.1		SHARM EL SHEIKH Tower 118.9		Ground 121.9	
RNAV	Final Apch Crs 219°	Mandatory Alt SH207 1600' (1481')	LNAV/VNAV DA(H) 400' (281')	Apt Elev 143'	Rwy 119'		
MISSED APCH: Climb direct to SH208. Turn LEFT to SH209, then turn LEFT climbing to SH303 at 4000' and hold, or as directed.							
Alt Set: hPa Rwy Elev: 4 hPa Trans level: FL 110 Trans alt: 9500' Baro-VNAV operations not authorized below 5°C.							
MSA ARP							



Gnd speed-Kts	70	90	100	120	140	160		SH208
Descent Angle	3.00°	372	478	531	637	743		
LNAV/VNAV: MAP at DA								
LNAV: MAP at RW22R								

LNAV/VNAV		LNAV	
DA(H) 400' (281')		MDA(H) 540' (421')	

ALS out		ALS out	
A			
B		800m	1600m
C	900m	1300m	
D		1600m	

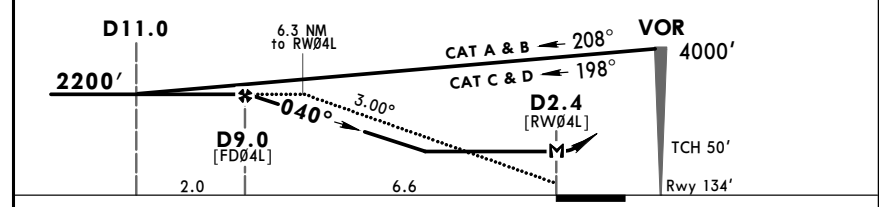
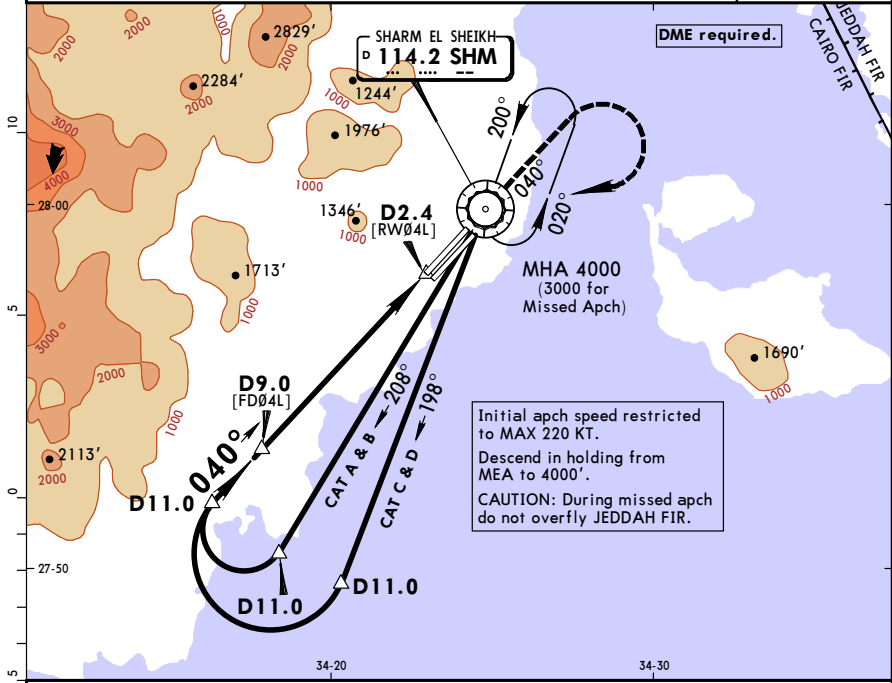
CHANGES: Altitude at SH303.

HESH/SSH SHARM EL SHEIKH INTL

SHARM EL SHEIKH INTL

16 DEC 16 (13-1) VOR Rwy 04L

ATIS 134.0		SHARM EL SHEIKH Radar (APP) 121.1		SHARM EL SHEIKH Tower 118.9		Ground 121.9	
VOR SHM 114.2	Final Apch Crs 040°	Minimum Alt D9.0 2200' (2066')	MDA(H) 640' (506')	Apt Elev 143'	Rwy 134'		
MISSED APCH: Climb STRAIGHT AHEAD on 040° to 2500', then turn RIGHT to reach VOR at 3000', or as directed.							
Alt Set: hPa		Rwy Elev: 5 hPa		Trans level: FL 110		Trans alt: 9500'	
MSA SHM VOR							



Gnd speed-Kts	70	90	100	120	140	160		2500' on 040°	
Descent Angle	3.00°	372	478	531	637	743			849
MAP at D2.4									

STRAIGHT-IN LANDING RWY 04L

MDA(H) 640' (506')

ALS out

A		
B	800m	
C		1600m
D	1600m	

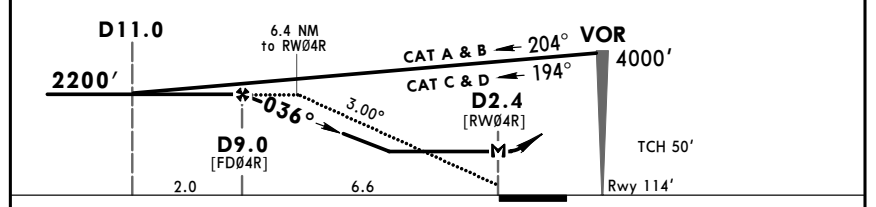
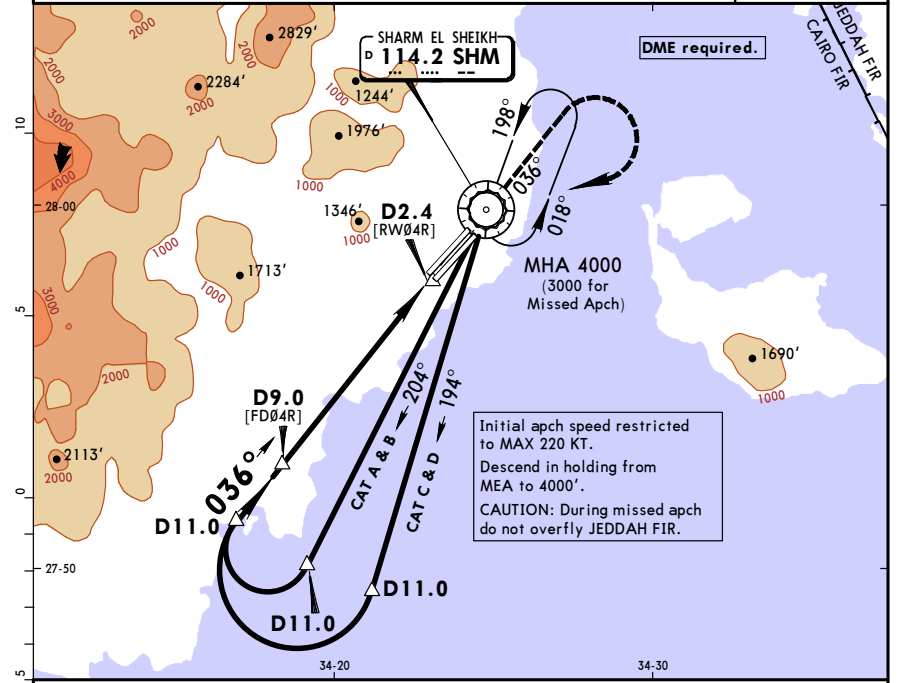
CHANGES: Procedure title. DME required note. Minimums.

HESH/SSH SHARM EL SHEIKH INTL

SHARM EL SHEIKH INTL

16 DEC 16 (13-2) VOR Rwy 04R

ATIS 134.0		SHARM EL SHEIKH Radar (APP) 121.1		SHARM EL SHEIKH Tower 118.9		Ground 121.9	
VOR SHM 114.2	Final Apch Crs 036°	Minimum Alt D9.0 2200' (2086')	MDA(H) 570' (456')	Apt Elev 143'	Rwy 114'		
MISSED APCH: Climb STRAIGHT AHEAD on 036° to 2500', then turn RIGHT to reach VOR at 3000', or as directed.							
Alt Set: hPa		Rwy Elev: 4 hPa		Trans level: FL 110		Trans alt: 9500'	
MSA SHM VOR							



Gnd speed-Kts	70	90	100	120	140	160		2500' on 036°	
Descent Angle	3.00°	372	478	531	637	743			849
MAP at D2.4									

STRAIGHT-IN LANDING RWY 04R

MDA(H) 570' (456')

ALS out

A		
B	800m	
C		1600m
D	1600m	

CHANGES: Procedure title. DME required note. Minimums.

Chart changes since cycle 01-2019

ADD = added chart, REV = revised chart, DEL = deleted chart.

ACT	PROCEDURE IDENT	INDEX	REV DATE	EFF DATE
-----	-----------------	-------	----------	----------

SHARM EL SHEIKH, (SHARM EL SHEIKH INTL - HESH)

TERMINAL CHART CHANGE NOTICES

Chart Change Notices for Airport HESH

Type: Terminal

Effectivity: Temporary

Begin Date: Immediately

End Date: Until Further Notice

Ufn RNAV SIDs/STARs suspended.